



- Intelligent Cycles Trading Advisor –

ICTA

© Lars von Thienen / November 2010

**DECODING
THE HIDDEN
MARKET RHYTHM**

A DYNAMIC APPROACH TO IDENTIFY
AND TRADE CYCLES THAT
INFLUENCE FINANCIAL MARKETS

What is ICTA ?

- **Intelligent:**

ICTA combines cycles know-how, visual charting & plotting, concrete textual explanation and trading rules in one engine.

- **Cycles:**

The backbone is the pure cycles engine from Decoding the Hidden Market Rhythm as explained in the book.

- **Trading:**

Exact rules for trigger signals (short/long), enter signals, profit taking, exit rules and stop/loss rules are embedded.

- **Advisor:**

The result of monitoring the cycle tools and applying the trading rules is plotted visually on the chart and in textual form for the trader.

What is ICTA telling me?

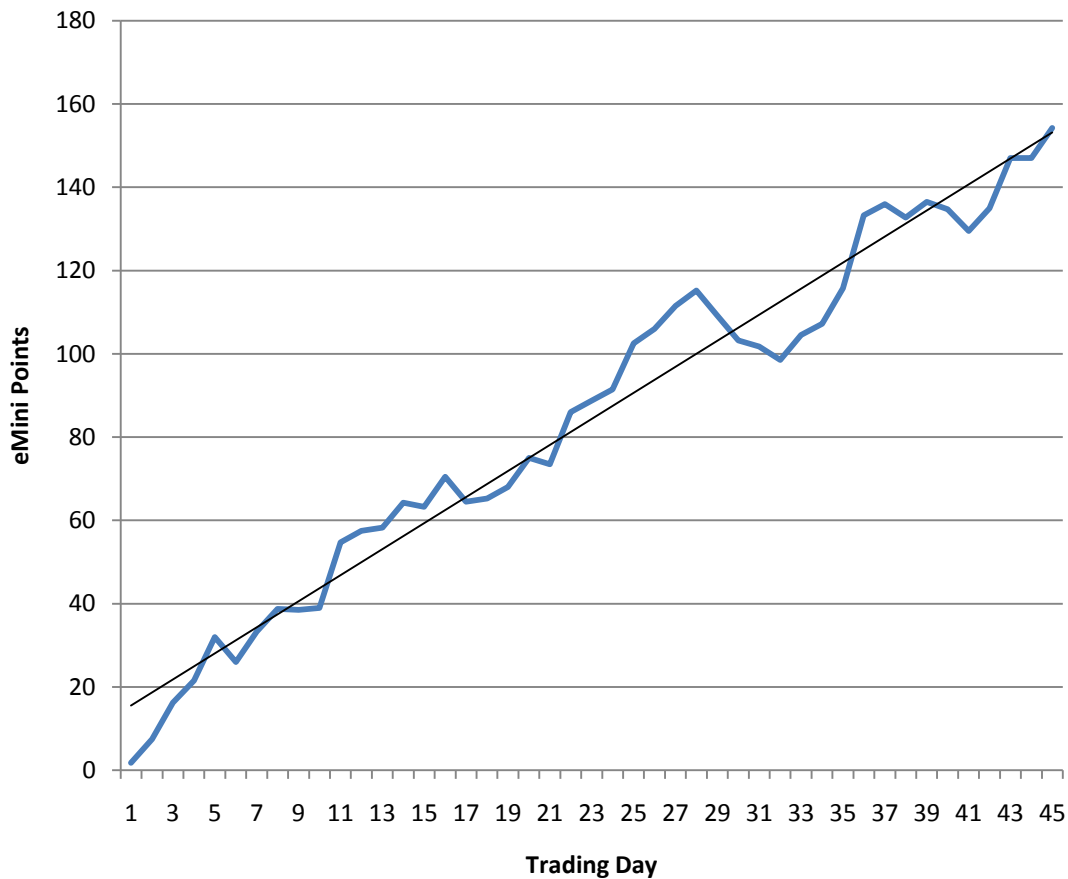
- Entry Trigger signals with concrete entry levels that should be used to go in the trade (short/long)
- Entry triggers are shown on the chart and printed in textual form
- Performed Short/Long Entries based on the levels
- Profit Target Levels to exit contracts shown on the chart on printed in textual form
- Automatic updating Stop/Loss Level after each bar to exit the complete trade shown on the chart and printed in textual form
- Complete trade log for each day to show results when purely following the advice
- All Signals and levels are shown/updated/printed in advance
- All signals can be passed over to your broker by entering the advisory info into your trade account

What would have happend if you had followed ICTA Model Type „Rosow I“ ?

ICTA - Equity Curve

Model Type: "Rosow I"

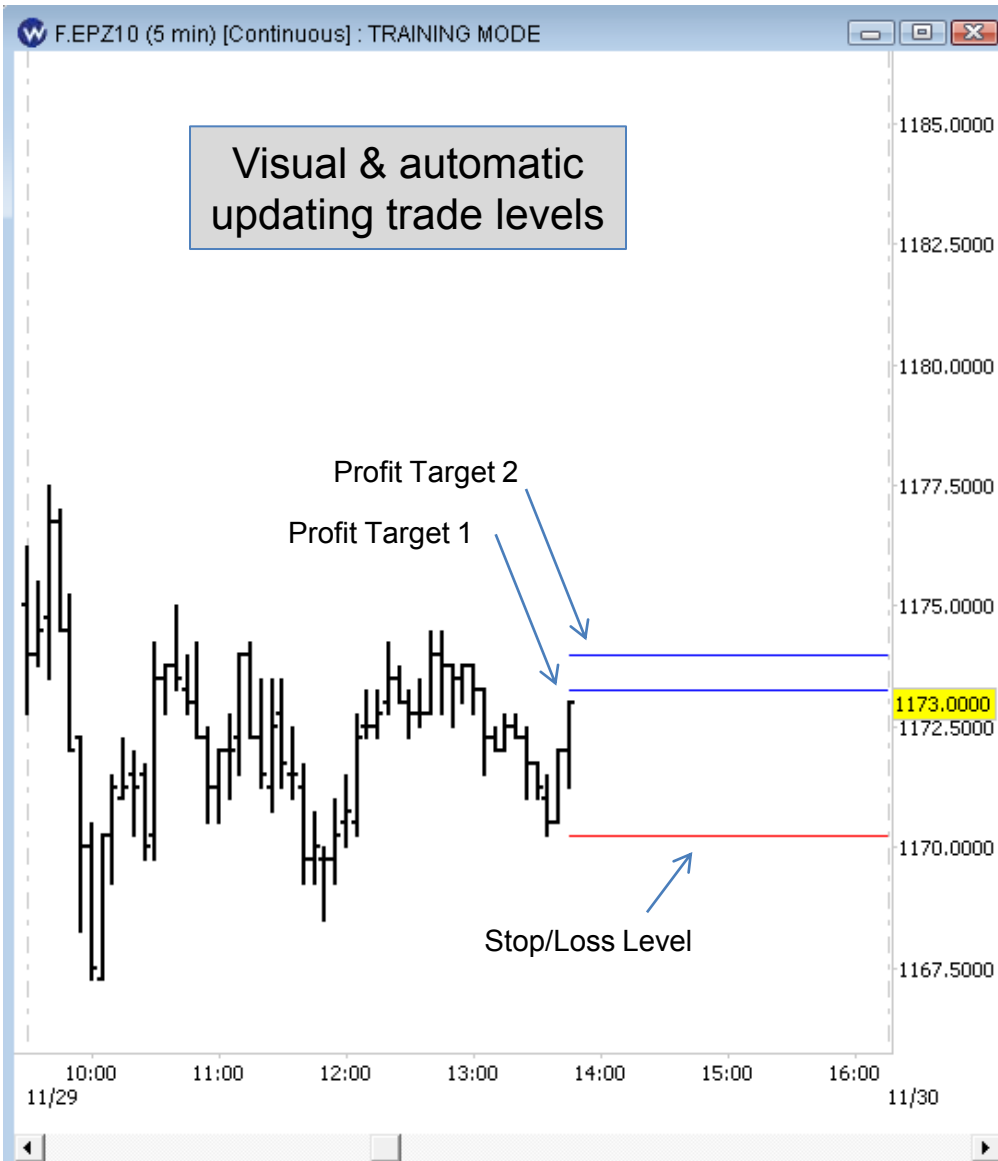
October 11 - December 13 2010



ICTA Statistics:

Percent Profitable	73%
Win/Loss Ratio	1,71
Profit Factor	4,69
Avg trades per day	3

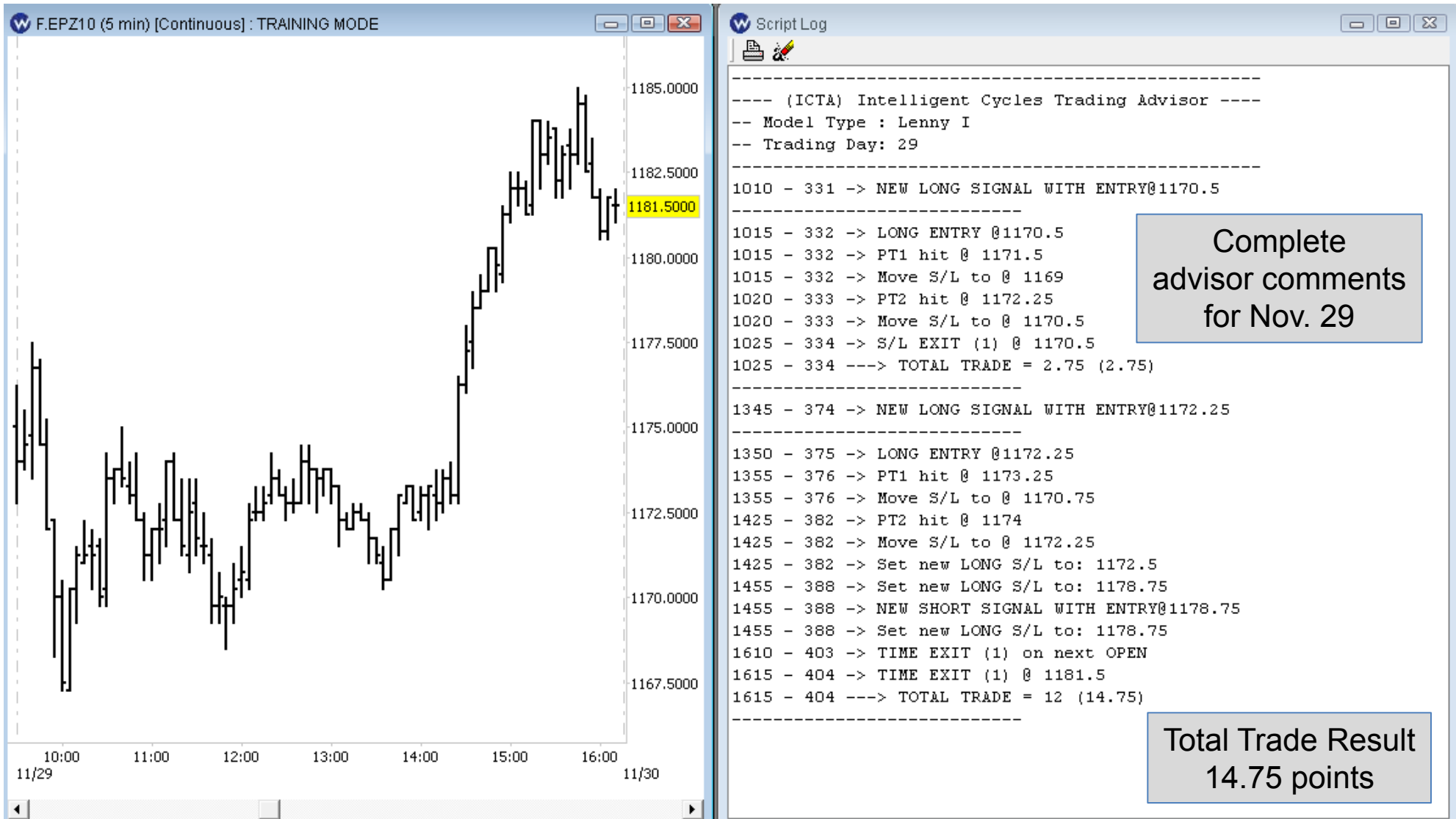
ICTA - Important Levels on the chart & exact text advice each bar



```
-----  
---- (ICTA) Intelligent Cycles Trading Advisor ----  
-- Model Type : Lenny I  
-- Trading Day: 29  
-----  
1010 - 331 -> NEW LONG SIGNAL WITH ENTRY@1170.5  
-----  
1015 - 332 -> LONG ENTRY @1170.5  
1015 - 332 -> PT1 hit @ 1171.5  
1015 - 332 -> Move S/L to @ 1169  
1020 - 333 -> PT2 hit @ 1172.25  
1020 - 333 -> Move S/L to @ 1170.5  
1025 - 334 -> S/L EXIT (1) @ 1170.5  
1025 - 334 ----> TOTAL TRADE = 2.75 (2.75)  
-----  
1345 - 374 -> NEW LONG SIGNAL WITH ENTRY@1172.25  
-----  
1350 - 375 -> LONG ENTRY @1172.25
```

Exact advice what to do at each bar on entry trigger/level target levels stop/loss level

ICTA Example – Complete advisor comments for Nov. 29



ICTA

- Real trading – all advisor comments are placed in advance and can be rebuilt by everyone
- Made easy - Concrete entry/exit rules; no time consuming self-interpretation of the rules
- No back-optimized system – pure trading rules only without any kind of curve-fitting
- Pure cycles – only based on cycles and cycles know-how
- Clear & clean charts – no overloaded charts with indicators
- Open – Apply and add your own money management/position sizing rules
- ...